

JCL1-00037-2



Current Data Parameters  
NAME jcl1-00037-2  
EXPNO 1  
PROCNO 1

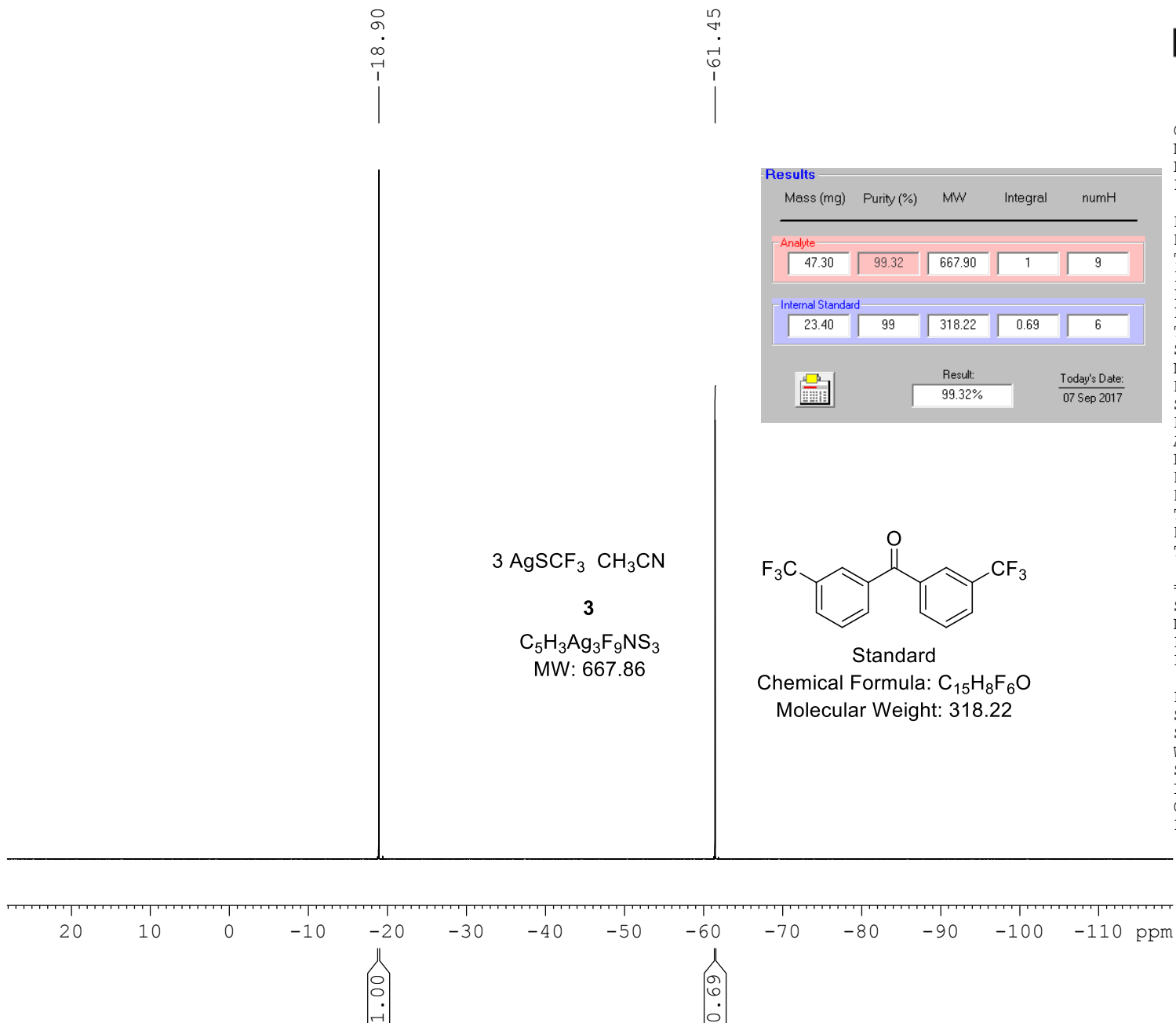
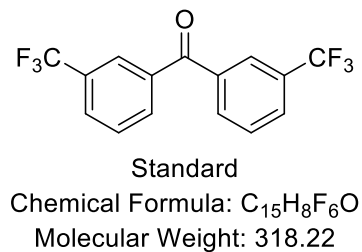
F2 - Acquisition Parameters  
Date\_ 20170906  
Time 17.12  
INSTRUM spect  
PROBHD 5 mm PABBO BB-  
PULPROG zg10flqn  
TD 159766  
SOLVENT DMSO  
NS 4  
DS 0  
SWH 69444.445 Hz  
FIDRES 0.434663 Hz  
AQ 1.1503152 sec  
RG 456  
DW 7.200 usec  
DE 6.50 usec  
TE 299.0 K  
D1 10.00000000 sec  
TD0 1

==== CHANNEL f1 =====  
SFO1 470.5709034 MHz  
NUC1 19F  
P1 15.00 usec  
PLW1 49.34000015 W

F2 - Processing parameters  
SI 16384  
SF 470.5923770 MHz  
WDW EM  
SSB 0  
LB 1.00 Hz  
GB 0  
PC 1.00

Mass (mg)	Purity (%)	MW	Integral	numH
<b>Results</b>				
<b>Analyte</b>				
47.30	99.32	667.90	1	9
<b>Internal Standard</b>				
23.40	99	318.22	0.69	6
Result:		Today's Date:		
99.32%		07 Sep 2017		

3 AgSCF<sub>3</sub> CH<sub>3</sub>CN  
**3**  
C<sub>5</sub>H<sub>3</sub>Ag<sub>3</sub>F<sub>9</sub>NS<sub>3</sub>  
MW: 667.86



JCL1-00037-3



18.91

61.47  
61.51

Results				
Mass (mg)	Purity (%)	MW	Integral	numH
<b>Analyte</b>				
46.70	99.09	667.90	1	9
<b>Internal Standard</b>				
30.40	99	318.22	0.91	6
Result:		Today's Date:		
99.09%		07 Sep 2017		

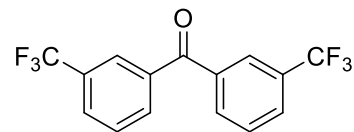
Current Data Parameters  
NAME jcl1-00037-3  
EXPNO 1  
PROCNO 1

F2 - Acquisition Parameters  
Date\_ 20170906  
Time 17.16  
INSTRUM spect  
PROBHD 5 mm PABBO BB-  
PULPROG zg10flqn  
TD 159766  
SOLVENT DMSO  
NS 4  
DS 0  
SWH 69444.445 Hz  
FIDRES 0.434663 Hz  
AQ 1.1503152 sec  
RG 456  
DW 7.200 usec  
DE 6.50 usec  
TE 299.0 K  
D1 10.00000000 sec  
TD0 1

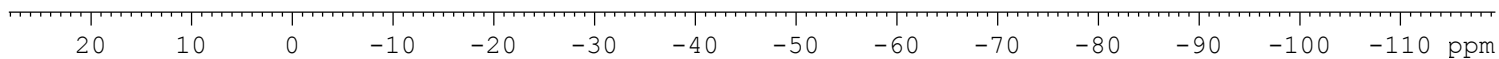
==== CHANNEL f1 =====  
SFO1 470.5709034 MHz  
NUC1 19F  
P1 15.00 usec  
PLW1 49.34000015 W

F2 - Processing parameters  
SI 16384  
SF 470.5923770 MHz  
WDW EM  
SSB 0  
LB 1.00 Hz  
GB 0  
PC 1.00

3 AgSCF<sub>3</sub> CH<sub>3</sub>CN  
**3**  
C<sub>5</sub>H<sub>3</sub>Ag<sub>3</sub>F<sub>9</sub>NS<sub>3</sub>  
MW: 667.86



Standard  
Chemical Formula: C<sub>15</sub>H<sub>8</sub>F<sub>6</sub>O  
Molecular Weight: 318.22



1.00

0.91